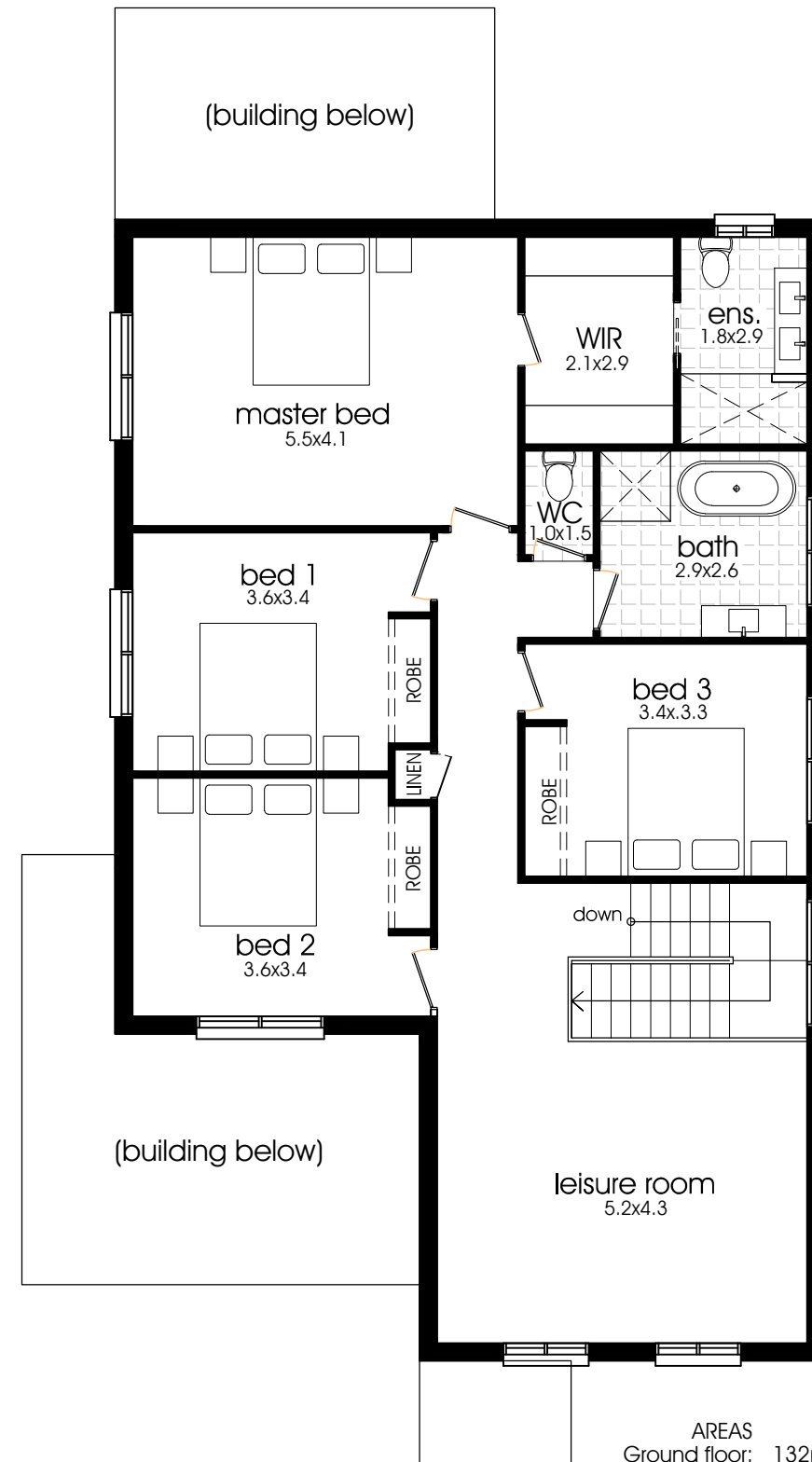
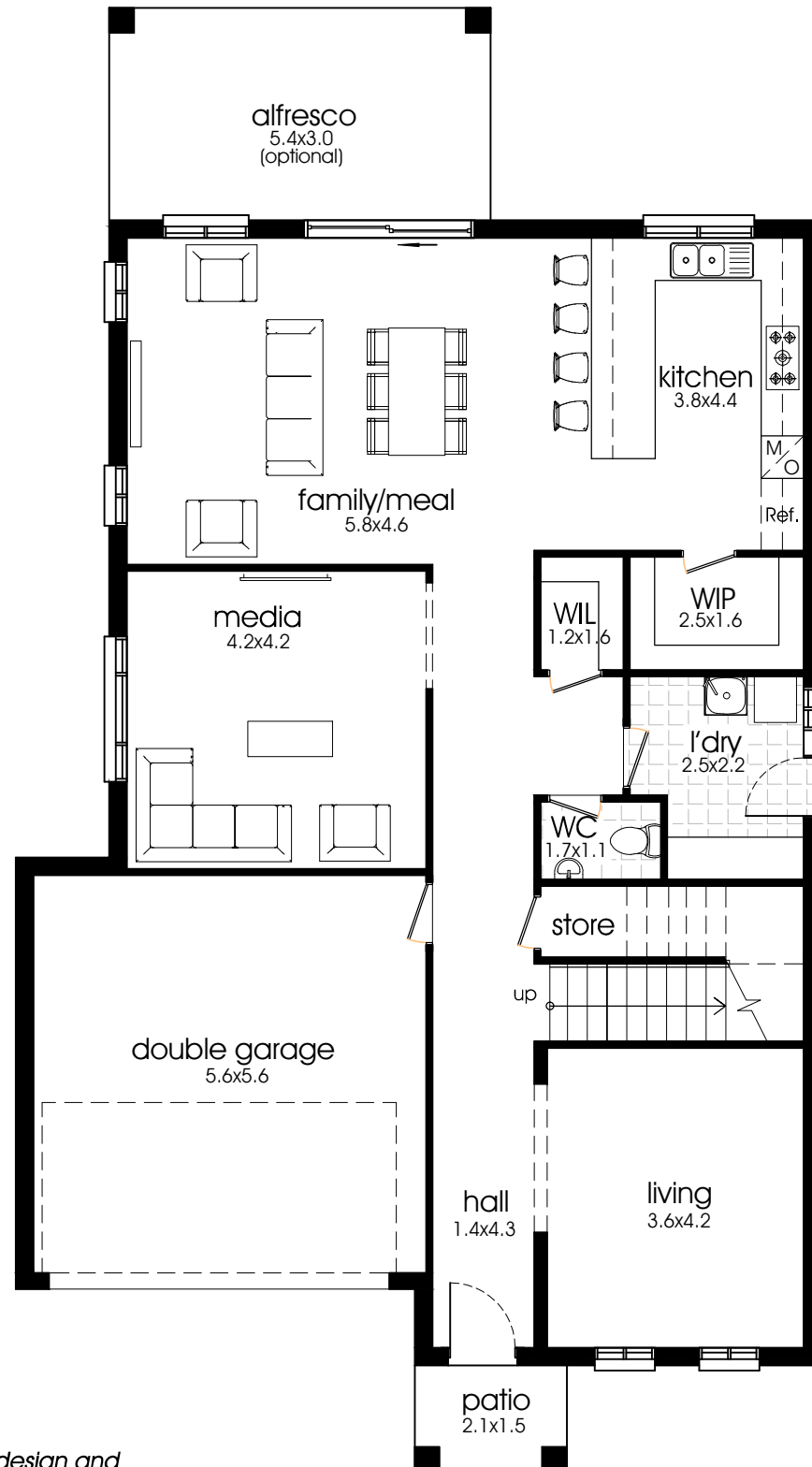


DUTTON



"Bluegem Homes is all about custom design and we are here to make your dream plans come to reality. Our plans can be modified and tailor made to suit your needs and requirements. Please speak to our sales personal for design options available for this floor design."

AREAS	
Ground floor:	132m ²
First floor:	143m ²
Garage:	34m ²
Patio:	3m ²
Alfresco:	16m ²
Total:	328m²

HOUSE	
Width:	11.4m
Length:	20.7m
Min lot width:	13.2m