



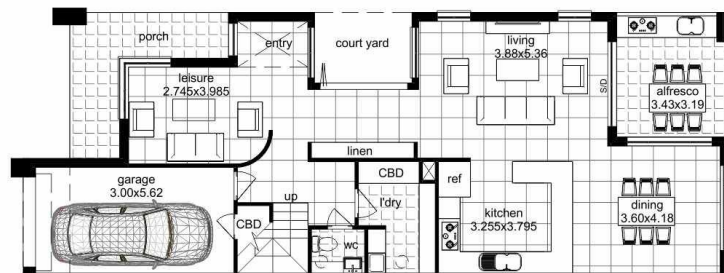
BLUEGEM
H O M E S
homes for life

TWIN FALLS

🛏️ 4 🚿 2 🚗 1

DUPLEX HOME

'Twin Falls' - This compact home with its creative use of internal/external space ensures airy, yet intimate and independent dwellings with free-flowing living and eating areas. Both have generously sized modern and well-appointed kitchens with ample storage and breakfast benches making this area a focus for family and friends to gather. With its clever floor plan, effective use of light and space along with its striking facade, makes Twin Falls ideal for all modern families and investors.



Ground floor



First floor

Ground Floor	98.56m ²
First Floor	118.54m ²
Garage	19.43m ²
Porch	10.13m ²
Alfresco	11.26m ²
Balcony	10.13m ²
Total	268.05m ²
Overall width	7.500m
Overall length	19.995m

Disclaimer: Photographs and other pictures in this brochure/book may show fixtures, fittings or finishes which are not supplied by Bluegem Homes, or which are only available in some Bluegem Homes designs or when selected as inclusions above the standard inclusions for a particular design. This may include landscaping and outdoor items, floor coverings, furniture, kitchen, bathroom and light fittings and decorative items, which are shown as examples only. Room sizes shown are approximate only and may vary slightly. Bluegem Homes also reserves the right to revise the plans and specifications. Please ring us on (02) 9604 2577 to discuss detailed pricing for the various design options available.

Please call us
(02) 9604 2577
www.bluegemhomes.com.au