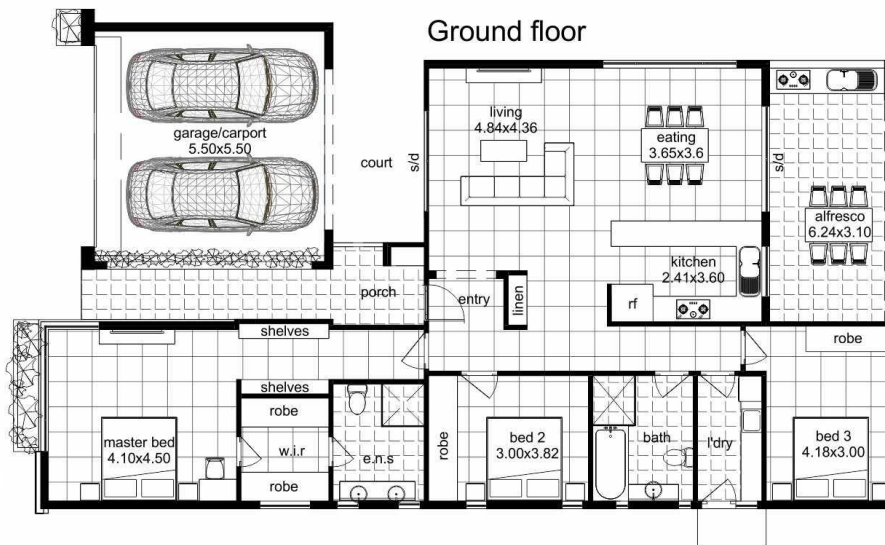




BLUEGEM
H O M E S
homes for life

KUPARR

 3
  2
  2



'Kuparr' - It's Aboriginal name for "red earth" captures the essence of the open spaces found in the Australian Outback. The "Kuparr" offers excellent orientation to its internal and external living areas. After walking through the Entry, you will be surprised just how intimate this big space can be with your choice of walking out onto an Alfresco area or even a winter courtyard. The separate garage / carport offers you additional flexibility in how you choose to use this home.

Living	142.81m ²
Garage	35.44m ²
Porch	11.72m ²
Alfresco	19.34m ²
Total	209.31m ²
Overall width	11.600m
Overall length	20.420m

Disclaimer: Photographs and other pictures in this brochure/book may show fixtures, fittings or finishes which are not supplied by Bluegem Homes, or which are only available in some Bluegem Homes designs or when selected as inclusions above the standard inclusions for a particular design. This may include landscaping and outdoor items, floor coverings, furniture, kitchen, bathroom and light fittings and decorative items, which are shown as examples only. Room sizes shown are approximate only and may vary slightly. Bluegem Homes also reserves the right to revise the plans and specifications. Please ring us on (02) 9604 2577 to discuss detailed pricing for the various design options available.

Please call us
(02) 9604 2577
www.bluegemhomes.com.au